

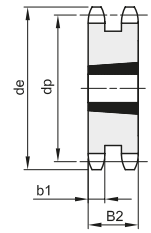
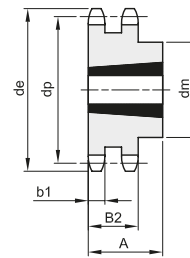
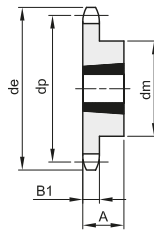
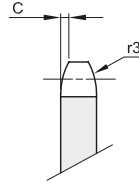


# PIGNONI PER BUSSOLA CONICA - DIN 8187 - ISO 606

## SPROCKETS FOR TAPER BUSHES - DIN 8187 - ISO 606

**1" x 17,02 mm**  
**25,4 x 17,02 mm**  
**Rullo 15,88 mm**  
**16B - 1 - 2 - 3**

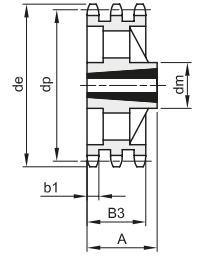
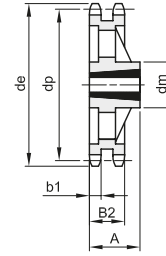
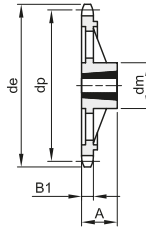
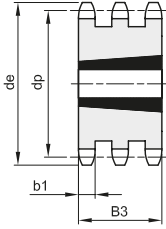
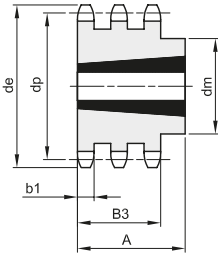
B1	B2	B3	b1	C	r3
16,2	47,7	79,6	15,8	2,5	26



1

2

3



4

5

6

7

8

Materiale: Acciaio C45 / \*Materiale: Ghisa EN-GJL-200

Z	de	dp	semplici					doppi					tripli							
			codice	dm	A	Bussola	Tipo	Kg.	codice	dm	A	Bussola	Tipo	Kg.	codice	dm	A	Bussola	Tipo	Kg.
13	117,7	106,13	381380013	73	38	1615	1	0,98												
14	125,7	114,15	381380014	75	38	1615	1	1,14												
15	133,7	122,16	381380015	76	38	1615	1	1,30	382380015	47,7	2012	3	2,11							
16	141,8	130,20	381380016	90	32	2012	1	1,40	382380016	47,7	2517	3	2,25							
17	149,8	138,23	381380017	90	32	2012	1	1,59	382380017	47,7	2517	3	2,53	383380017	79,6	2517	5	4,29		
18	157,8	146,28	381380018	108	44	2517	1	2,10	382380018	47,7	2517	3	3,10							
19	165,9	154,31	381380019	108	44	2517	1	2,29	382380019	47,7	2517	3	3,80	383380019	79,6	3030	5	4,36		
20	173,9	162,38	381380020	110	44	2517	1	2,60	382380020	47,7	2517	3	4,10							
21	182,0	170,42	381380021	110	44	2517	1	2,81	382380021	140	51	3020	2	4,15	383380021	79,6	3030	5	6,69	
22	190,1	178,48	381380022	110	44	2517	1	3,10	382380022	140	51	3020	2	4,90						
23	198,1	186,53	381380023	110	44	2517	1	3,38	382380023	140	51	3020	2	5,69	383380023	159	89	3535	4	7,80
24	206,2	194,59	381380024	110	44	2517	1	3,70	382380024	140	51	3020	2	6,00						
25	214,2	202,66	381380025	110	44	2517	1	3,97	382380025	140	51	3020	2	6,38	383380025	175	89	3535	4	10,93
26	222,3	210,72	381380026	110	44	2517	1	4,26	382380026	140	51	3020	2	7,80						
27	230,4	218,79	381380027	110	44	2517	1	4,55	382380027	140	51	3020	2	9,27	383380027	175	89	3535	4	14,06
28	238,4	226,85	381380028	110	44	2517	1	5,26	382380028	140	51	3020	2	11,40						
30	254,6	242,99	381380030	120	44	2517	1	5,97	382380030	140	76	3030	2	13,50	383380030	175	89	3535	4	19,10
38	319,2	307,59	381380038	160	51	3020	1	8,73	382380038	*160	76	3030	7	14,94	383380038	*175	89	3535	8	21,65
45	377,9	364,12	381380045	160	51	3020	1	12,49	382380045	*160	76	3030	7	19,80	383380045	*175	89	3535	8	28,10
57*	474,9	461,07	381380057	160	51	3020	6	13,87	382380057	175	89	3535	7	22,00	383380057	216	102	4040	8	40,50
76*	628,4	614,65	381380076	160	51	3020	6	22,63	382380076	175	89	3535	7	37,00	383380076	216	102	4040	8	53,30