

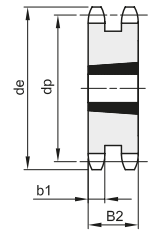
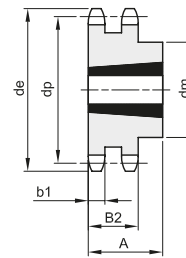
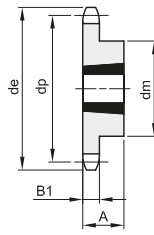
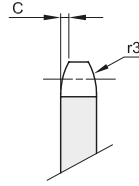


# PIGNONI PER BUSSOLA CONICA - DIN 8187 - ISO 606

## SPROCKETS FOR TAPER BUSHES - DIN 8187 - ISO 606

**1"1/4 x 3/4"**  
**31,75 x 19,56 mm**  
 Rullo 19,05 mm  
**20B - 1 - 2 - 3**

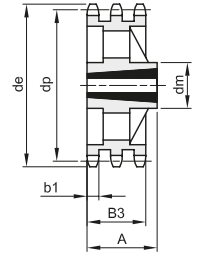
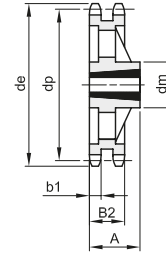
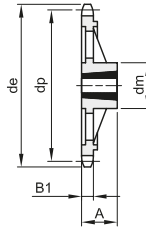
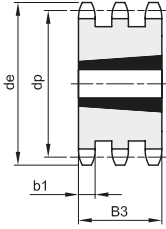
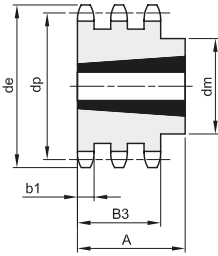
B1	B2	B3	b1	C	r3
18,5	54,6	91	18,2	3,5	32



1

2

3



4

5

6

7

8

Materiale: Acciaio C45 / \*Materiale: Ghisa EN-GJL-200

Z	de	dp	semplici					doppi					tripli							
			codice	dm	A	Bussola	Tipo	Kg.	codice	dm	A	Bussola	Tipo	Kg.	codice	dm	A	Bussola	Tipo	Kg.
12	137,0	122,68	381400012	90	32	1615	1	1,90												
13	147,5	132,65	381400013	90	32	2012	1	1,50	382400013	54,6	2517	3	2,20							
14	157,6	142,68	381400014	110	44	2517	1	2,40												
15	167,7	152,72	381400015	110	44	2517	1	3,39	382400015	54,6	2517	3	4,00	383400015	91	3020	5	4,43		
16	177,7	162,75	381400016	110	44	2517	1	4,23												
17	187,7	172,78	381400017	110	44	2517	1	5,07	382400017	54,6	2517	3	5,00	383400017	91	3030	5	7,39		
18	197,8	182,85	381400018	110	44	2517	1	5,91												
19	207,9	192,91	381400019	110	44	2517	1	6,75	382400019	140	76	3030	2	6,30	383400019	91	3030	5	11,65	
20	217,9	202,98	381400020	110	44	2517	1	7,23												
21	228,0	213,04	381400021	120	44	2517	1	7,70	382400021	140	76	3030	2	8,80	383400021	91	3535	5	12,80	
23	248,2	233,17	381400023	120	44	2517	1	8,78	382400023	140	76	3030	2	9,80	383400023	91	3535	5	17,38	
25	268,4	253,33	381400025	120	44	2517	1	9,50	382400025	140	76	3030	2	10,50	383400025	91	3535	5	22,40	
30	318,7	303,75	381400030	160	51	3020	1	11,60	382400030	160	76	3030	2	14,00	383400030	91	3535	5	36,50	
38*	399,4	384,49	381400038	160	51	3020	6	15,80	382400038	160	76	3030	7	22,00	383400038	178	91	3535	8	28,00
57*	592,3	576,36	381400057	160	51	3020	6	17,90	382400057	175	89	3535	7	37,00	383400057	216	102	4040	8	42,00
76*	784,3	768,32	381400076	160	51	3020	6	25,00	382400076	175	89	3535	7	62,00	383400076	260	114	4545	8	85,00